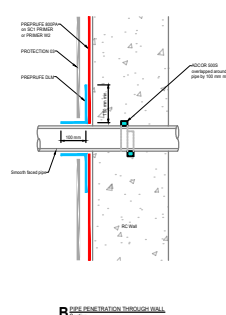
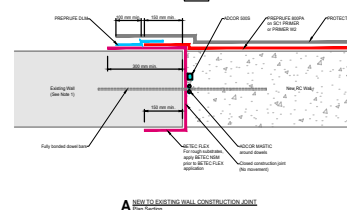


Internal & External Corners
SC-PPA-25-002



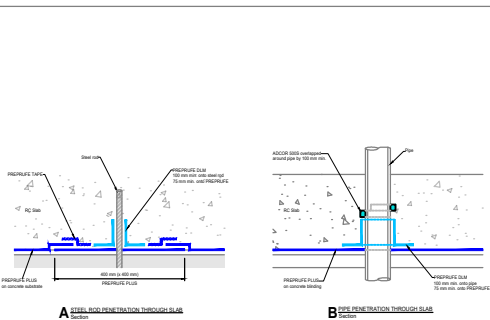
Wall Pipe Penetrations
SC-PPA-25-022



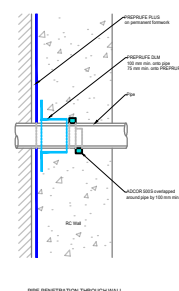
New to Existing Construction Joint
SC-PPA-25-015

PREPRUFE® Helt vidhäftande membran för vattentätning av konstruktioner under mark

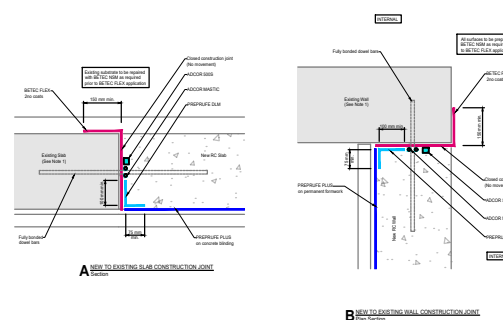
För tekniska frågor eller fler detaljritningar besök gcpat.se



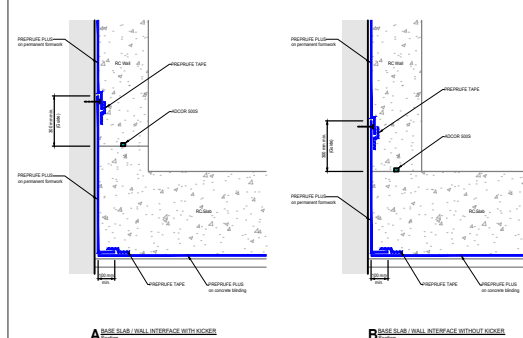
Slab Penetrations
SC-PPL-25-022



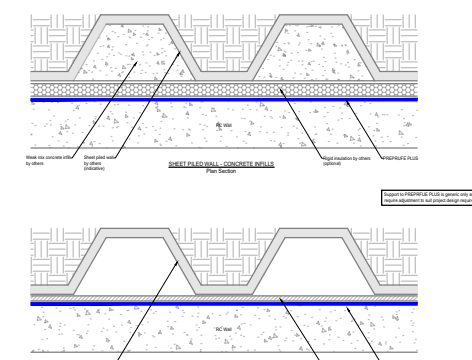
Wall Pipe Penetration
SC-PPL-25-032



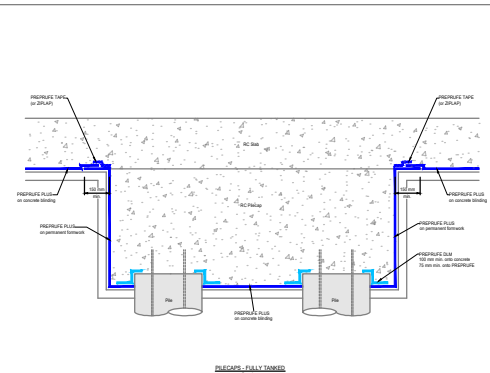
New to Existing Construction Joints
SC-PPL-25-015



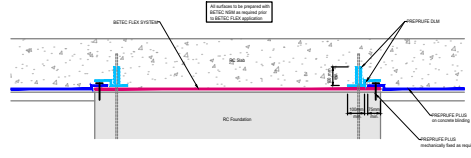
Base Slab-Wall-Permanent Formwork
SC-PPL-25-051



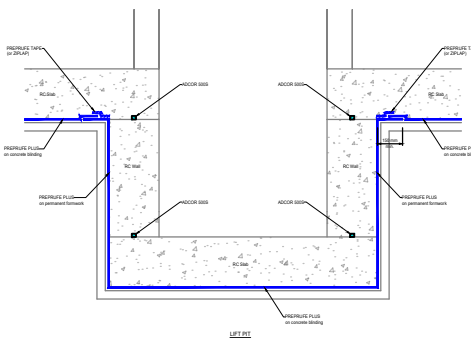
Sheet Piled Wall Facing Options
SC-PPL-25-054



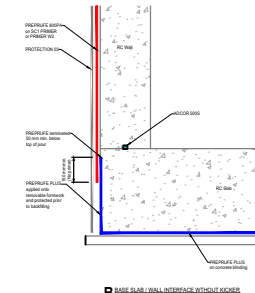
Pilecaps - Fully Tanked
SC-PPL-25-041



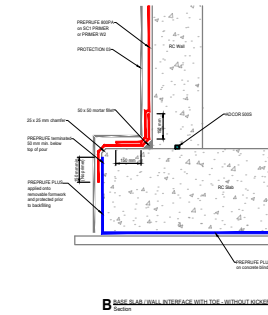
Pilecaps - Alternative
SC-PPL-25-042



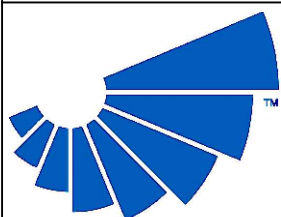
Lift Pit
SC-PPL-25-043



Base Slab-Wall Interface
SC-PPA-25-031



Base Slab-Wall Interface With Toe
SC-PPA-25-032



GCP - Chryso Nordic AB
Färgvägen 8
443 61 Stenkullen
T: +46313525080



gcpat.se

Products referenced are trademarks which may be registered in the United States and/ or other countries, of GCP Applied Technologies Inc. This is based on available published information as of the publication date and may not accurately reflect current trademark ownership or status. These products may be covered by patents or patents pending.

This drawing is Copyright 2024 of GCP Applied Technologies. Permission for copying is granted only to employees, authorised representatives, customers, and specifiers to support the sale or use of GCP Applied Technologies products. All other rights are reserved.

Description: DETAIL LOCATOR				
Date: 03-2025	Drawn by: DMC	Approved by: BC	Scale@A3: N.T.S	
Drawing No: SC-LOC-24-001				Rev: -
Rev:	Date:	By:	App:	Description: