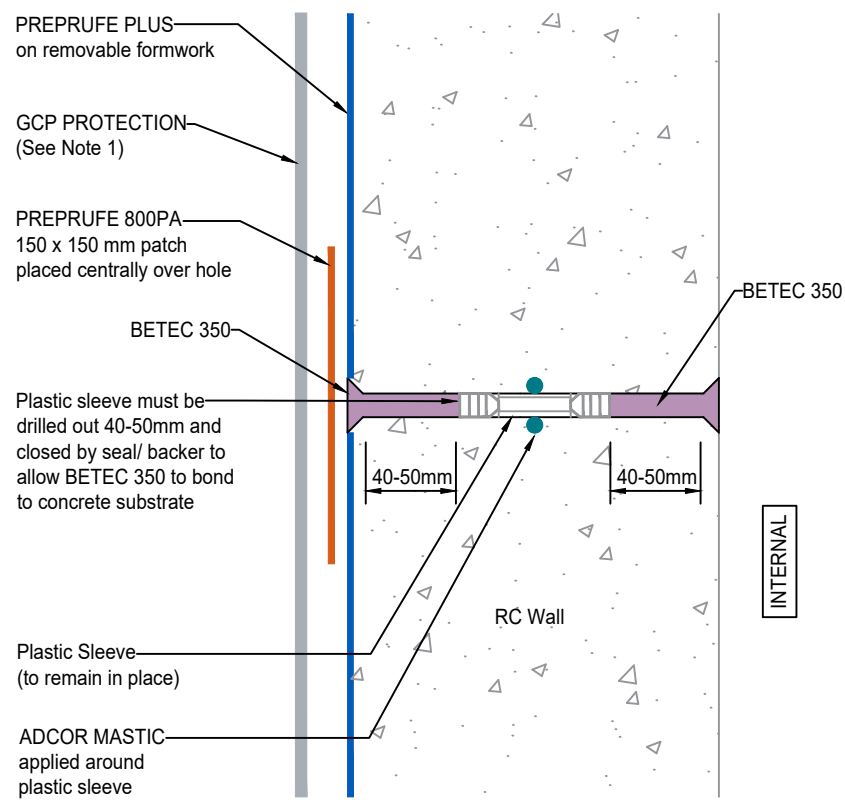


PERMANENT FORMWORK TIE
Plan / Section



REMOVABLE FORMWORK TIE
Plan / Section

General Notes & Guidance:

For those third parties responsible for the design of the waterproofing system, such parties must ensure the proposed system and details shown herein are brought to the attention of those responsible for the overall design of the structure, to ensure compatibility of the waterproofing system and detailing with all elements of the structural design. Final decisions, acceptance and any recommendations must be approved in writing between such responsible parties.

For product installation this drawing is to be read in conjunction with all relevant product data sheets and application guidelines.

Drawing Notes:

Note 1
Product to suit specific site conditions. Contact GCP APPLIED TECHNOLOGIES for guidance.

Rev	Date	Description

Additional Info:

Date:	Scale @ A4: N.T.S	Drawn:	Checked:
-------	----------------------	--------	----------

Project Ref:	Drawing No: PP-21-08	Rev:
--------------	-------------------------	------



GCP APPLIED TECHNOLOGIES

487/488 Ipswich Road, Slough, Berkshire, SL1 4EP, UK
T: +44 (0)1753 490000 E: info-gb@gcpat.com W: www.gcpat.com

ADCOR, ADPRUFE, AEROFIL, ARMOURTAPE, AQUATEK, BETEC, BENTORUB, BITUSHIELD, BITUSTIK, BITUTHENE, COLFLEX, DECSEAL, ELIMINATOR, GRACE ICE & WATER SHIELD, HYDRODUCT, INTEGRITANK, METASET, MS FIXER, OMNITEK, PAK ADHESIVE, PERM-A-BARRIER, PERMARE, PREPRUFE, PREPRUFE PLUS, PVC EDGETIE, RE-INJECTO, SAFETRACK, SENTINEL, SERVIDEK, SERVIPAK, SERVIRUFE, SERWISEAL, SERVITAPE, SERVITITE, SILCOR, SLIPSTRIP, SOLARSHIELD, ZIPLAP and GCP APPLIED TECHNOLOGIES are trademarks which may be registered in the United States and/ or other countries, of GCP Applied Technologies Inc. This trademark list has been compiled using available published information as of the publication date and may not accurately reflect current trademark ownership or status. These products may be covered by patents or patents pending.

This drawing is Copyright 2021 of GCP Applied Technologies. Permission for copying is granted only to employees, authorised representatives, customers, and specifiers to support the sale or use of GCP Applied Technologies products. All other rights are reserved.

Project:
Client:
Title: **WALL TIES**
TYPE A (PRE-APPLIED) - PREPRUFE PLUS SYSTEM