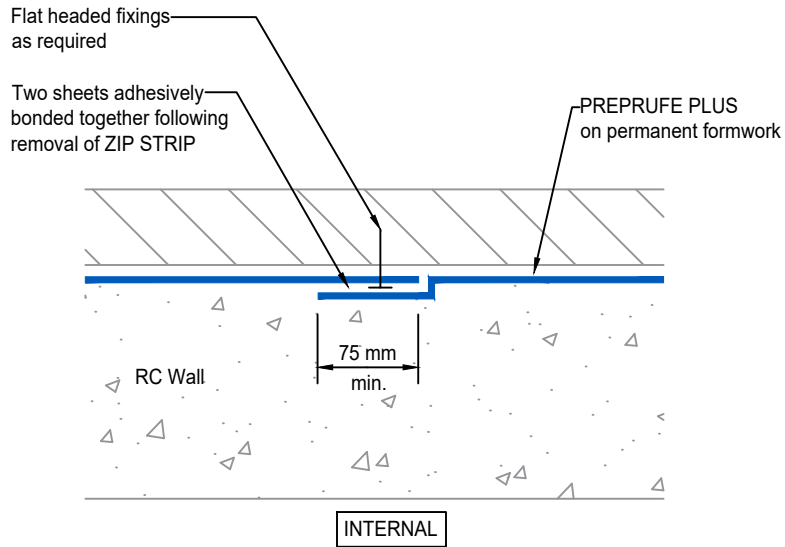
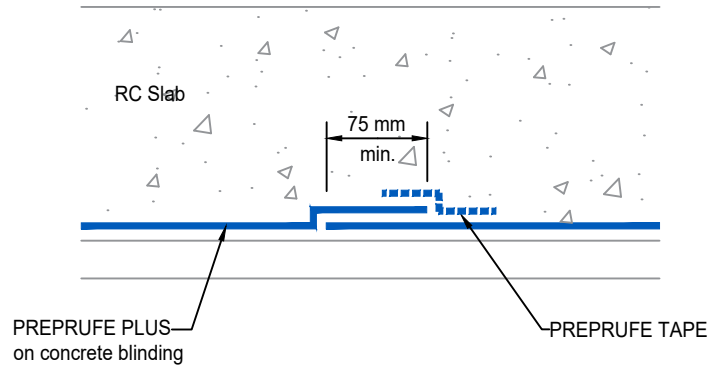


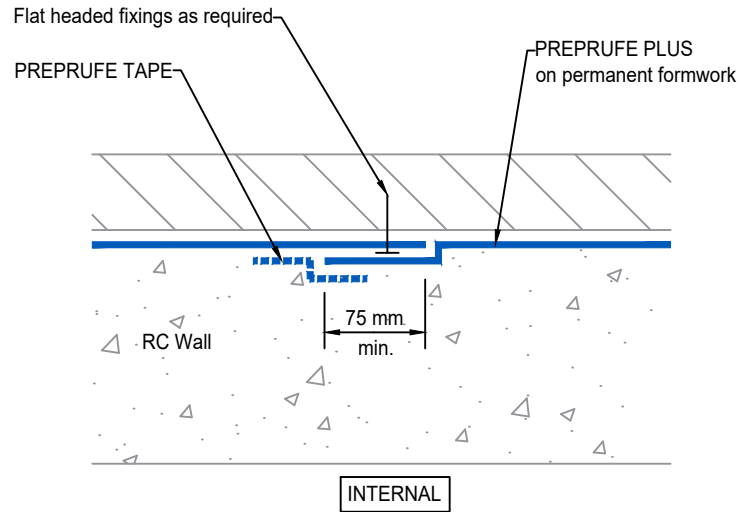
OVERLAP ALONG ZIPLAP
Horizontal Installation
Section



OVERLAP ALONG ZIPLAP
Vertical Installation
Plan Section



OVERLAP AT END / CUT EDGES
Horizontal Installation
Section



OVERLAP AT END / CUT EDGES
Vertical Installation
Plan Section

OVERLAP DETAILS

General Notes & Guidance:

For those third parties responsible for the design of the waterproofing system, such parties must ensure the proposed system and details shown herein are brought to the attention of those responsible for the overall design of the structure, to ensure compatibility of the waterproofing system and detailing with all elements of the structural design. Final decisions, acceptance and any recommendations must be approved in writing between such responsible parties.

For product installation this drawing is to be read in conjunction with all relevant product data sheets and application guidelines.

Drawing Notes:

Rev	Date	Description

Additional Info:

Date:	Scale @ A4: N.T.S	Drawn:	Checked:
Project Ref:	Drawing No: PP-21-01	Rev:	